



Anchoring

Jobsite Report 86

Self drilling anchors

Drilling Rig

KLEMM KR 801-3GK

Customer

Dupont NV

Place

Linden, Belgium

Drilling Job

Drilling anchor boreholes to secure a single layer excavation pit lining for the construction of a new residential and commercial building. The bores were drilled at a relatively shallow angle of approx. 15° - 20° from the horizontal axis. The rigs articulated boom can reach both deep and shallow drilling points, even when space restrictions inhibit the rig being placed directly along the shoring wall.

Drilling Method

Percussion drilling with hydraulic drifter

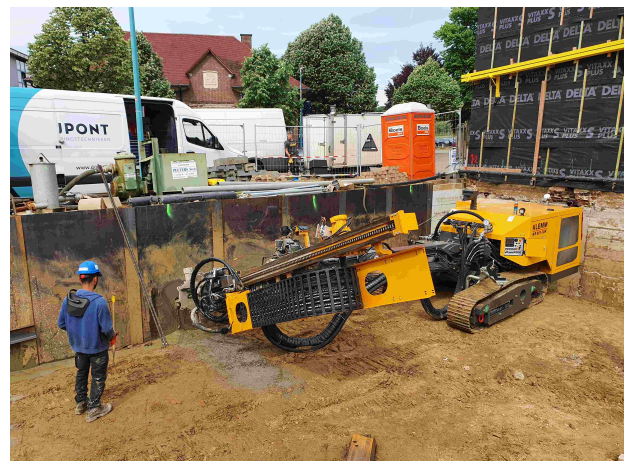
Drill Diameter: Anchor Ischebeck 30/11 und 40/16

Drill Depth: up to 15 m

Ground conditions: Sand, Clay

Equipment

- Drilling rig: KR 801-3GK with 160 hp power rate, type „K“ boom for extra-long reach
- Drill mast: type 140/3, sectional version 3,600 mm + 1,000 mm, retraction force 30kN
- Hydraulic drifter: KD 1011 with shank adaptor H55



[Translate to English:]

[Translate to English:]